



ALASKA DIVISION OF HOMELAND SECURITY & EMERGENCY MANAGEMENT

SITUATION REPORT 23-321 • November 17, 2023



Toll-Free 1.800.478.2337

Anchorage Area 907.428.7000

SEOC 907.428.7100

<p><u>SEOC Preparedness Level</u></p> <p>Level 1 - Routine Operations</p>	<p>http://ready.alaska.gov</p>	<p><u>National Terrorism Advisory System:</u></p> <p>Read the NTAS Bulletin here</p>
<p><u>Maritime Security (MARSEC)</u> Level: 1- Minimum Appropriate Security Measures</p>	<p>WHO Novel Coronavirus Pandemic (COVID-19): 2019 Novel Coronavirus</p>	<p><u>Alaska Military Installation Force Protection Level:</u> FPCON Bravo</p>

(Significant changes from previous situation reports are red.)

Significant Issues:

Nothing to report.

State of Alaska Department of Health (DOH)

The DOH stands ready to assist with all aspects of public health and in the event of a public health emergency, supported by the SEOC and other state departments as required. For current information, see:

<https://health.alaska.gov/dph/Pages/default.aspx>

<https://health.alaska.gov/dph/Emergency/Pages/prepared/default.aspx>

NTAS Bulletin

The U.S. Department of Homeland Security issued an updated National Terrorism Advisory Bulletin on May 24, 2023. The current and expired bulletins can be viewed at the below link.

<https://www.dhs.gov/national-terrorism-advisory-system>

Travel Alerts and Conditions

For current driving conditions, dial 511 or link to <https://511.alaska.gov/>

Barry Arm Landslide / Tsunami Risk

For the latest information on the Barry Arm Landslide and Tsunami risk, click here:

<https://dggs.alaska.gov/hazards/barry-arm-landslide.html>

Earthquakes

United States Geological Service (USGS) Earthquake Information: <http://earthquake.usgs.gov/>

National Tsunami Warning Center: <http://tsunami.gov/>

Alaska Volcanoes

Great Sitkin Alert Level: **Watch** and Aviation Color Code: **Orange**

Bogoslof Alert Level: **Advisory** and Aviation Color Code: **Yellow**

Shishaldin Alert Level: **Watch** and Aviation Color Code: **Orange**

Trident Alert Level: **Advisory** and Aviation Color Code: **Yellow**

For Alaska Volcano updates, go to: <https://www.avo.alaska.edu/>

Air Quality Index (AQI) Advisories

For the most up to date Air Quality Index Advisories:

<http://dec.alaska.gov/Applications/Air/airtoolsweb/Home/Index>

Spills of Oil and Hazardous Substances

The Alaska Division of Environmental Conservation (ADEC) Spill Prevention and Response page is located at:

<https://dec.alaska.gov/spar/>

Alaska Cyber Security Information

State Employees may sign up for cyber security notifications and alerts at

<https://oit.alaska.gov/security>

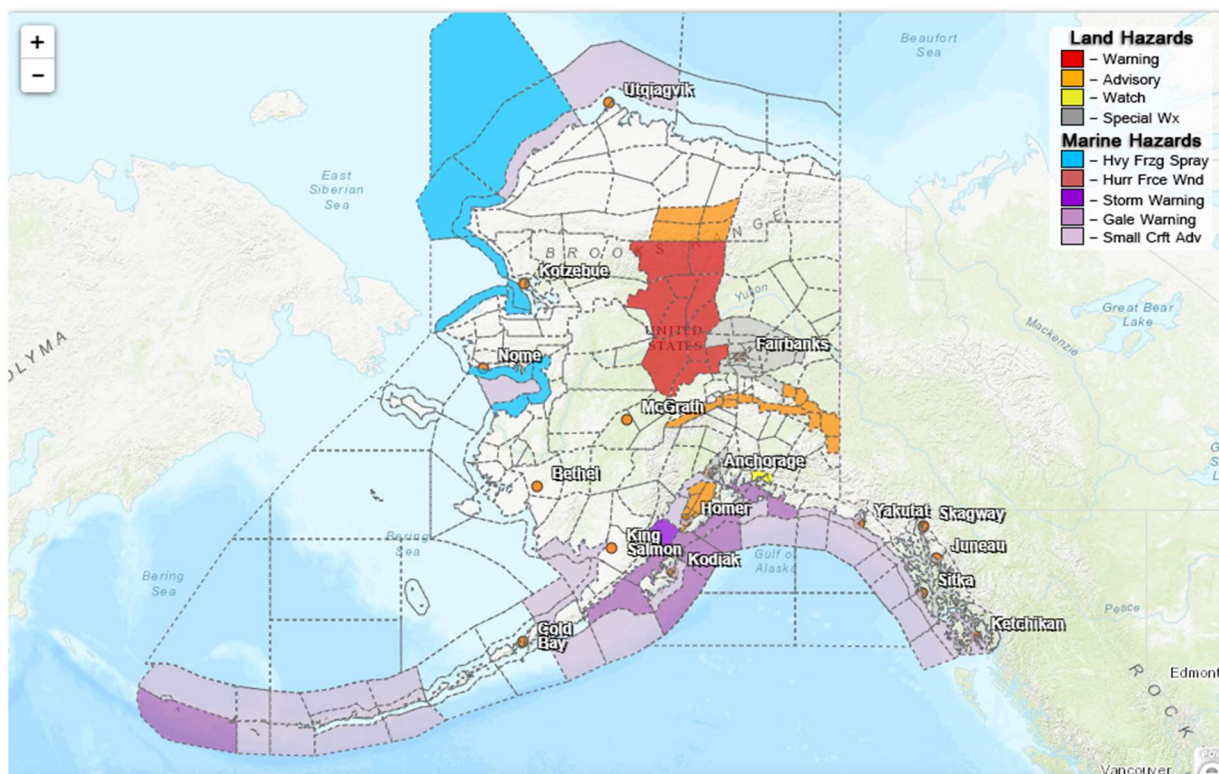
Cybersecurity and Infrastructure Security Agency (CISA)-Cybersecurity Services and Tools:

www.cisa.gov/free-cybersecurity-services-and-tools

Avalanche Hazards:

- **Hatcher Pass – Moderate at Low Levels and High at Mid and Upper elevations currently.**
- Other locations are not posting danger levels until a later date.

Significant Weather:



Flood Advisory:

- **Ward Lake and areas near the Ward Lake Recreational Area** – advisory in effect until 8AM AKST Saturday.
- **Ketchikan Gateway Borough** – advisory in effect until 8AM AKST Saturday.

Winter Storm Warnings:

- **South Slopes of The Central Brooks Range; Upper Koyukuk Valley; Dalton Highway Summits; Central Interior** – in effect until 11AM AKST this morning.

Winter Weather Advisory:

- **Western Kenai Peninsula** – advisory in effect until noon today.
- **Southern Denali Borough; Central Brooks** – advisory in effect until 3PM AKST today.
- **Eastern Alaska Range South of Trims Camp** – advisory in effect until 6AM AKST Saturday.
- **Upper Tanana Valley** – advisory in effect from 7PM this evening to 9AM AKST Saturday.
- **Susitna Valley north of Talkeetna** - advisory in effect until 5PM AKST Friday.

Winter Storm Watches:

- **Northeast Prince William Sound** – watch in effect from late tonight through late Saturday night.

Special Weather Statements:

- **Anchorage** – bands of moderate to heavy snow showers from Anchorage to Bird Point for today's commute.
- **White Mountains and High Terrain South of the Yukon River; Delta Junction; Upper Chena River Valley; Tanana Flats; Eielson AFB and Salcha; Goldstream Valley and Nenana Hills; Chatanika River Valley; Two Rivers; Fairbanks Metro Area; Nenana** – light snow this morning.
- **Anchorage; Matanuska Valley; Western Kenai Peninsula** – falling temperatures creating icy conditions overnight.

For more information and the most current weather, Watches / Warnings / Advisories go to:

<https://www.weather.gov/arh/>

The Next Situation Report will be **November 20, 2023**. A significant change in the situation or the threat level will prompt an interim report. This report is posted on the internet at

<https://ready.alaska.gov/sitrep>.

To register for email distribution, go to <http://list.state.ak.us/mailman/listinfo/dhsem.situation.report>.

Direct questions regarding this report to the SEOC at 907-428-7100 or seoc@alaska.gov